

What is this Consultation On?

Firstly, welcome to this public consultation event! We are consulting and seeking feedback from local residents on exciting proposals for a new primary school, secondary school and sports campus at Whitecliffe. In time, it is hoped that these will become a focal point for community activity in Whitecliffe with the facilities available to school children and the wider community alike.

Each of the consultation boards will provide an idea of the concepts being considered for the new space. We would love to hear your feedback on these. Members of the Design Team are also on hand to answer queries that you have.

The approved planning permission for the whole Whitecliffe area requires that 3 x new primary schools, one secondary school and new sports pitches are provided as part of the development. Cherry Orchard school represents the first primary school on site in Castle Hill and these proposals being consulted on are for:

- The 2nd Primary School and Nursery – this will be built as an 2 Form Entry Intake Primary School, approximately 446 pupils in total when the school and nursery is fully operational.
- The Secondary School – this will be built as a 8 Form Entry Intake, approximately 1,680 pupils when the school is fully operational; and
- Sports complex and the sports pitches.

The schools will be built to respond to modern educational needs and have access to start of the art sporting facilities including a running track, sports centre, hockey pitch, crickets pitches and football pitches.

Where is it Located?

Collectively the 2nd primary school, secondary school and sports pitches are known as the 'Education Hub'. As shown in the adjacent site plan, this is located in the centre of the new Whitecliffe development. The Fastrack route will run along the south of the Education Hub and provide regular services during the school day. The Education Hub is centrally located in the Whitecliffe Masterplan to ensure that maximum opportunities for cycling and walking are undertaken.

Is this Just About New Schools?

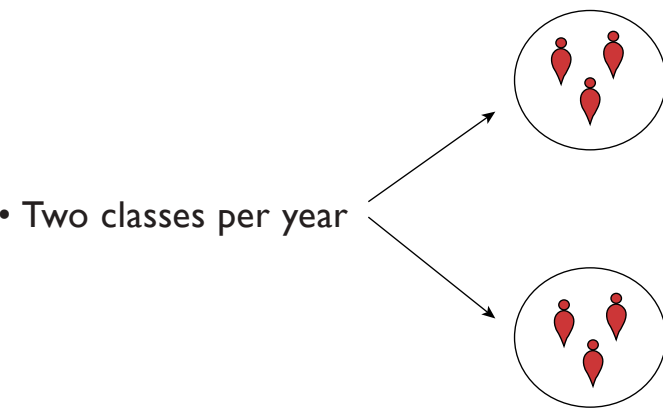
No. Whilst the new primary school and secondary school are a significant part of the proposals, a key part of the proposals is that the start of the art sporting facilities can be accessed and utilised by wider members of the community during non-school hours. This will ensure that local residents have close access to facilities that will allow health and active lifestyles to flourish.



PS

2FE Primary School and Nursery 2,218 m2
Occupancy: 446

10 pupils 6 pupils



- A Primary School for educating children between the ages of 4 and 11
- Maintained Early Years Provision (Nursery)
- Multi Agency Space (Kent County Council)

• Nursery Places: 26

10 pupils 6 pupils

• Reception Places: 60

10 pupils 6 pupils

• Infant Places: 120

10 pupils 6 pupils

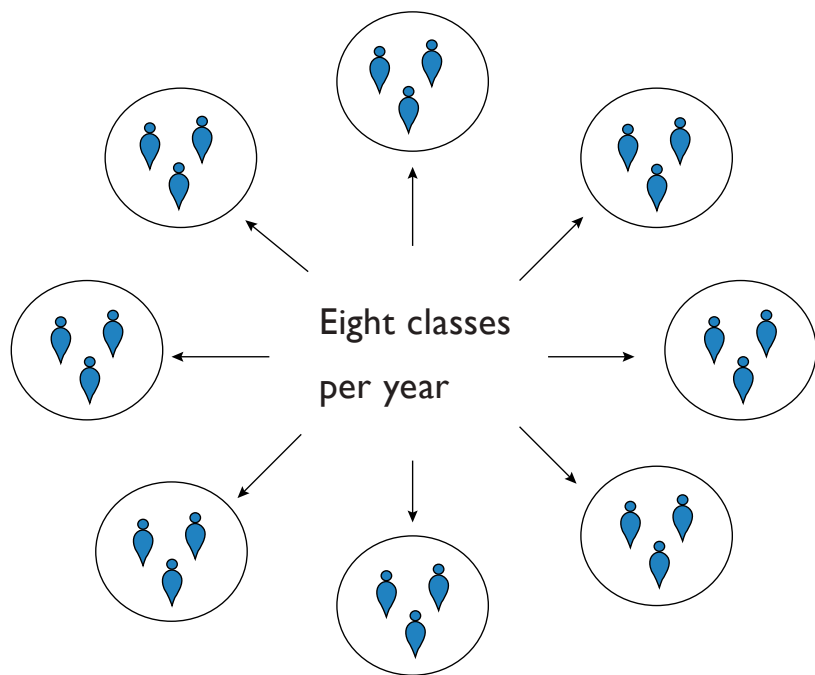
• Junior Places: 240

10 pupils 6 pupils

SS

8FE Secondary School 12,693 m2
Occupancy: 1,680

10 pupils



- A School for educating children between the ages of 11 and 19, including 6th form and a 25 place specialist resourced provision (SRP) for pupils whose primary barrier to learning is a diagnosis of Autism.

• 11-16 Age Group Places: 1,200

10 pupils

• 16-19 Age Group Places: 480

10 pupils

CS

Community Sports 1,900 m2
Occupancy: 560

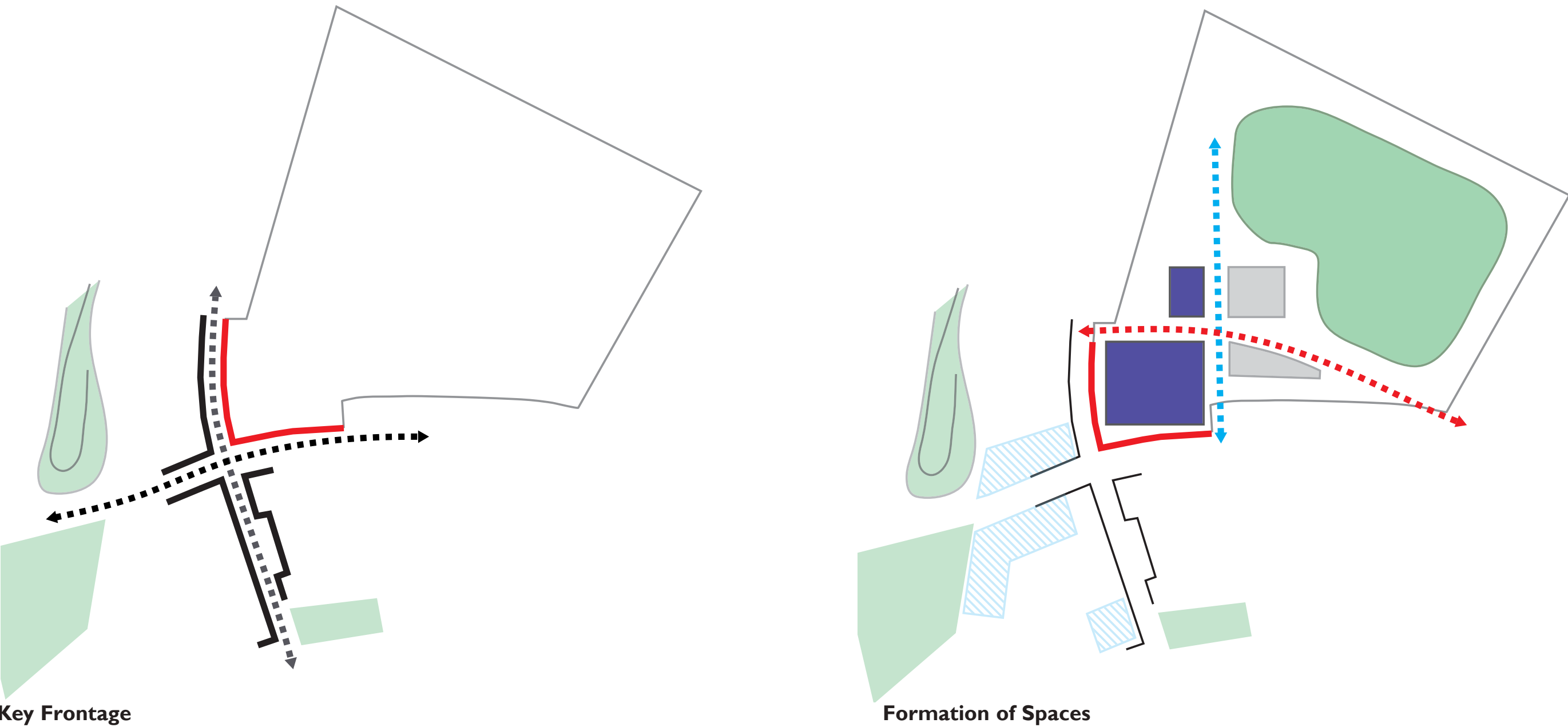
10 people

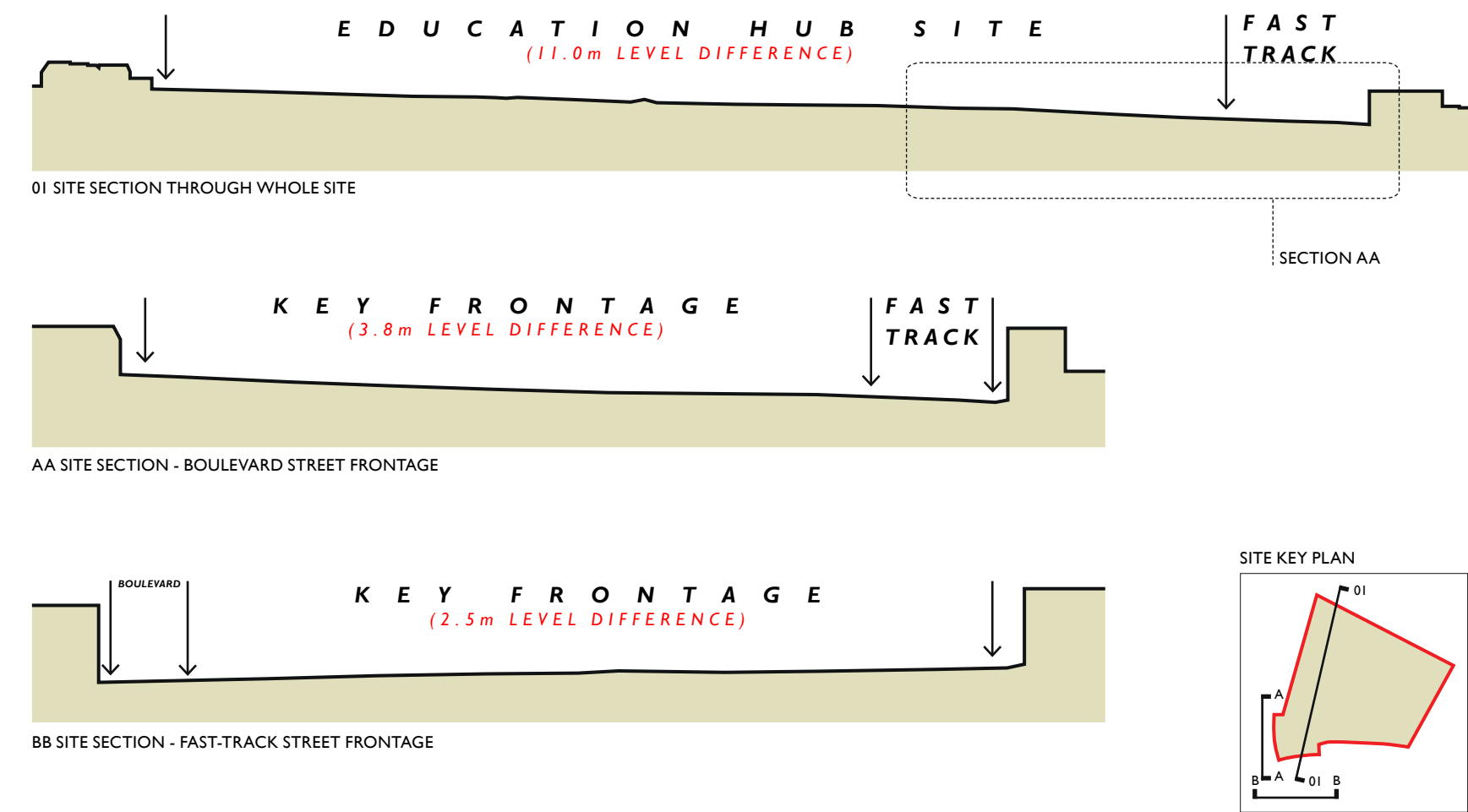
- Four Court Sports Hall: 250
- Dance studio (dual use): 30
- Fitness suite (dual use): 30
- Viewing Gallery: 150
- Cafe and Bar: 100



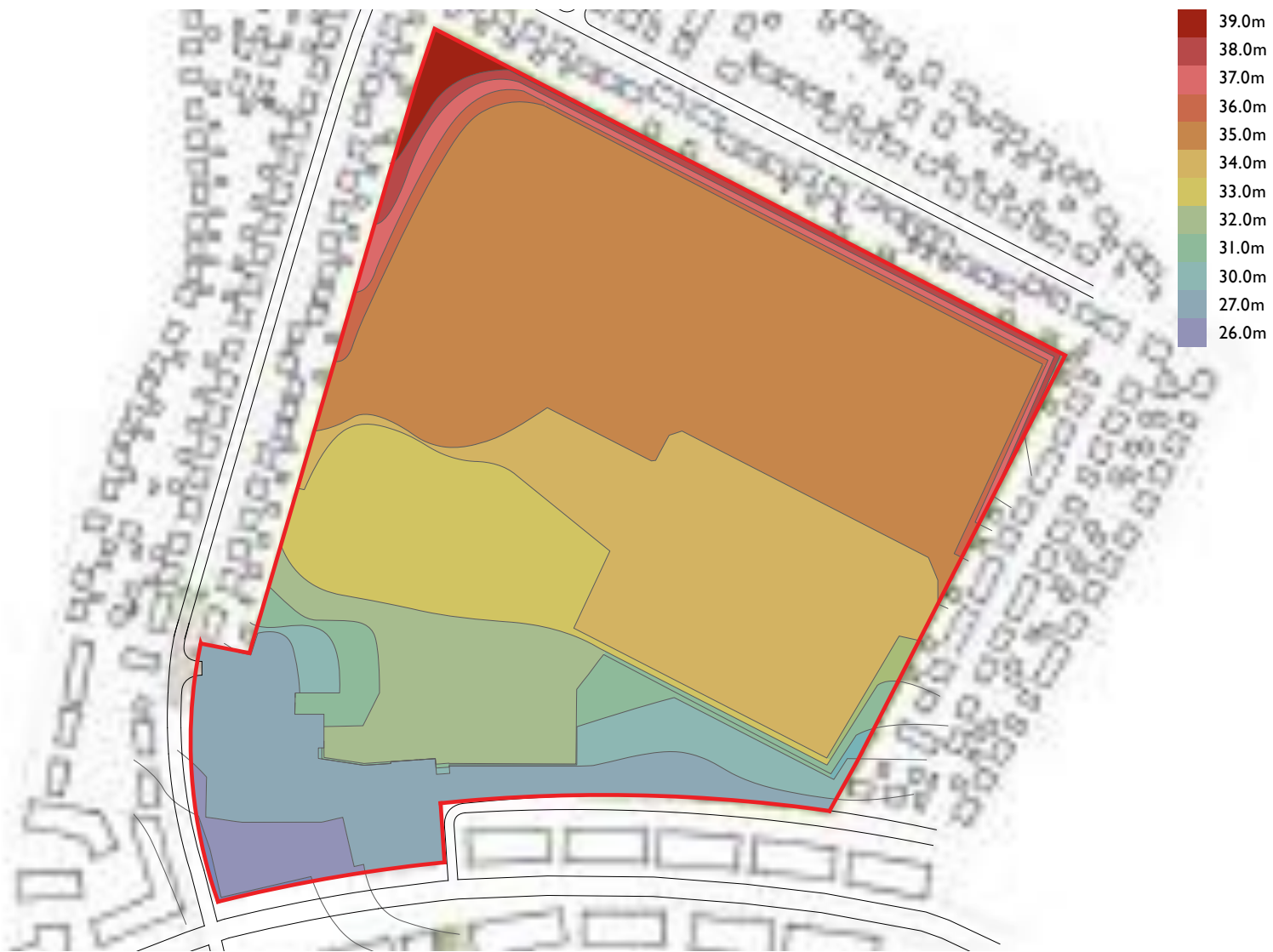
Creating a place for Community

The Education campus occupies an extremely important position in Alkerden at the junction between Fastrack and the northsouth Primary Street. This corner site is in a highly visible location on elevated land that will face towards the Major Urban Park and down the View Corridor. The site also provides a 'gateway' to the Education Campus site. This landmark site will front directly on to Community Heart Square and as such, should be designed to work together with the public realm design proposed.





Site Sections



'Heat Map' of Site Topography



Key Frontage / Landmark

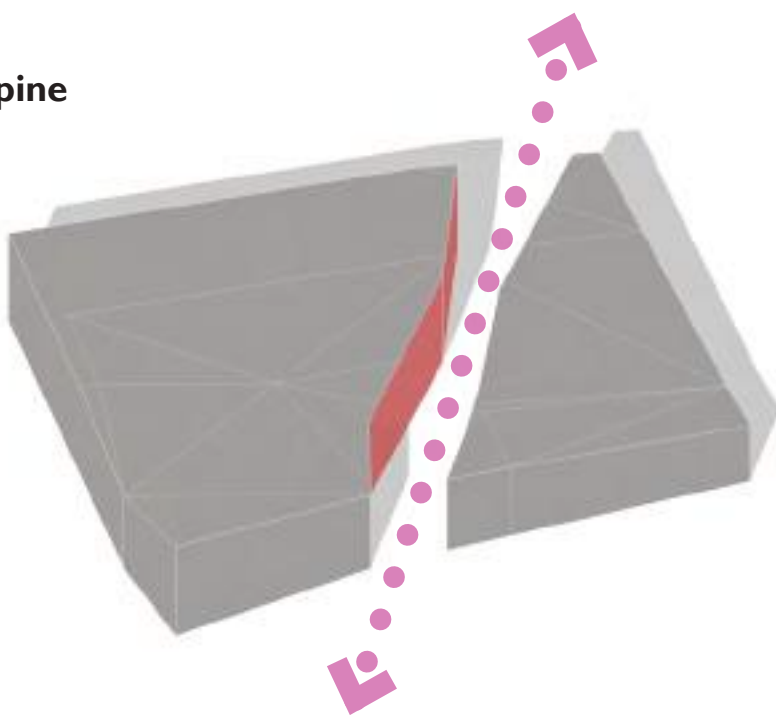


Massing

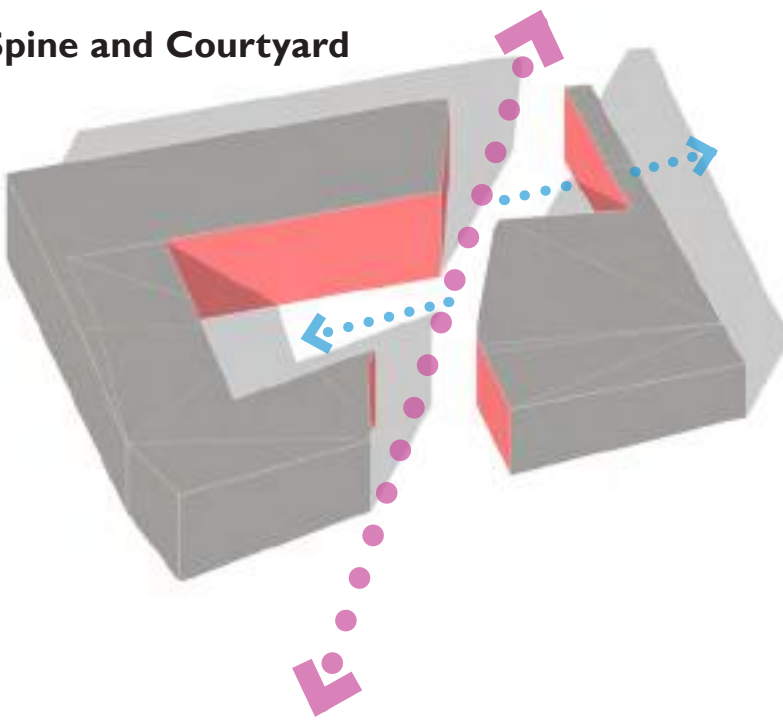


Built Form Narrative

Spine



Spine and Courtyard







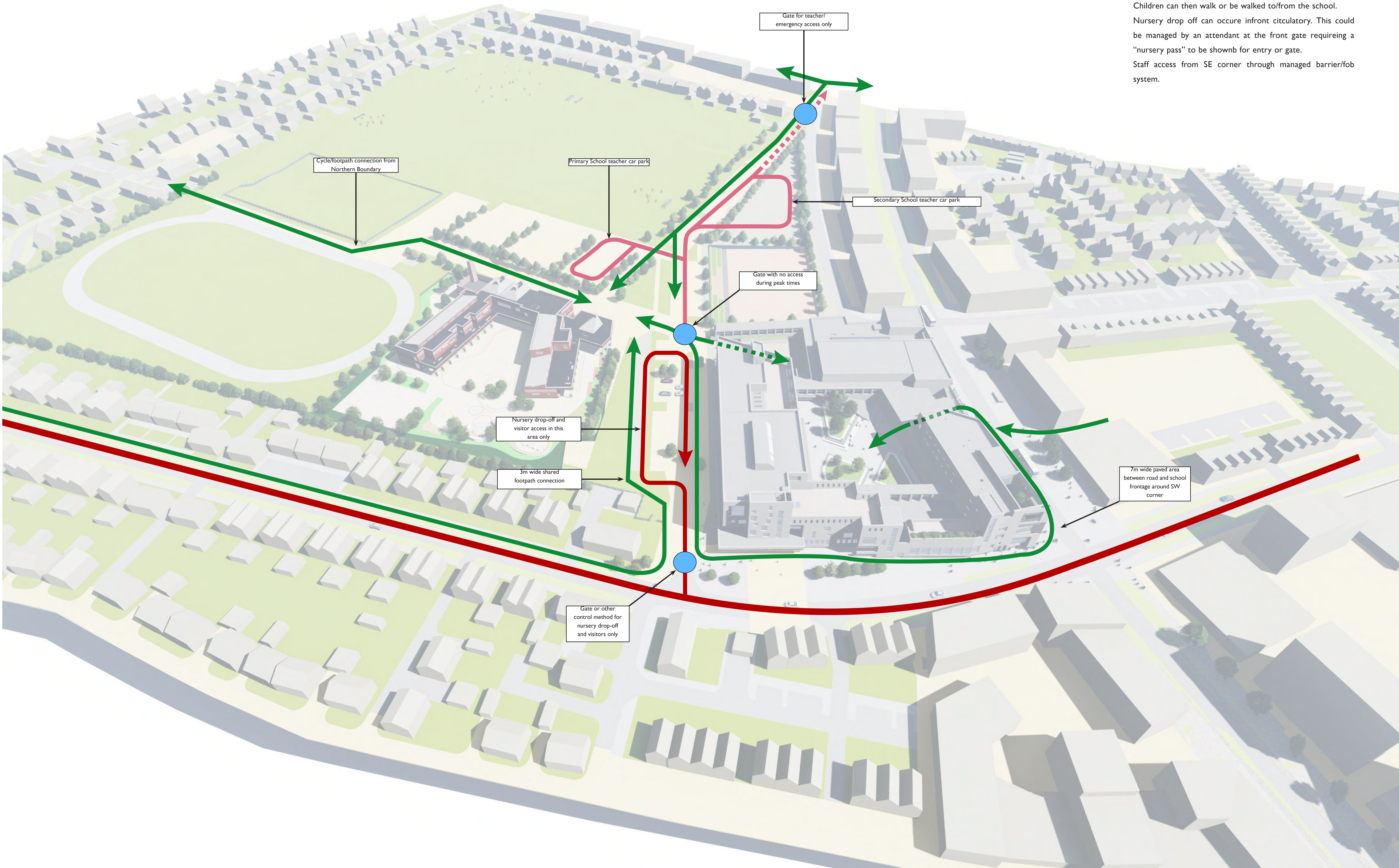
- 1 Fastrack Bus Stop
- 2 Pupil Entrance 01
- 3 Secondary School Cloister
- 4 Secondary School Visitor Entrance
- 5 Pupil Entrance 01
- 6 3 Court Multi-Games Area
- 7 Drop-off/Visitor Parking
- 8 Central Plant Pavilion
- 9 Nursery Drop off
- 10 Primary School & Nursery
- 11 Primary Multi- games Area
- 12 Track & Field facility
- 13 Pedestrian and cycle entrance
- 14 All weather pitch
- 15 Sports Pavilion
- 16 4no grass pitches
- 17 Cricket pitch
- 18 Parking
- 19 Staff entrance

Pick up and drop off for schools is off site in public car park within Market Center.

Children can then walk or be walked to/from the school.

Nursery drop off can occur in front of the school. This could be managed by an attendant at the front gate requiring a "nursery pass" to be shown for entry or gate.

Staff access from SE corner through managed barrier/fob system.





Primary School First Floor Plan



Primary School Ground Floor Plan



Primary School Entrance



Primary School Elevation 01



Primary School Section 01



Primary School Section 02



Primary School Elevation 02

- Basic Teaching Area
- Circulation
- Learning Recourse Area
- Staff and Admin Area
- Storage
- Non-Net Area (Toilets, Kitchen & Prep.)
- Large Spaces (Halls, Studios and Dining)

