



**WELCOME TO THE LATEST NEWSLETTER FROM HENLEY CAMLAND,  
DESIGNED TO KEEP YOU UP-TO-DATE WITH PROGRESS AT WHITECLIFFE.**

**Due to Covid-19, the Community Liaison Committee consisting of local councillors, residents and resident association representatives has met bi-monthly via Zoom since our last newsletter. Henley Camland continues to update the committee on the latest plans and answer questions raised via the Zoom meetings and bi-monthly report.**



## CO-OP STORE NOW OPEN AT CASTLE HILL

The new Ebbsfleet Co-op store is now open and will remain so during the current lockdown. The store offers the usual range of Co-op goods to customers and has created 15 new jobs. Manager Scott is looking forward to meeting everyone. The store will be open seven days a week from 7am to 10pm. It's running on 100% renewable electricity.

With a no charge ATM, bakery and Costa coffee point, Ebbsfleet Co-op will focus on fresh healthy produce, award-winning wines, ready meals and pizzas, free-from and vegan products, Fairtrade, food-to-go and everyday essentials.

Students who are TOTUM cardholders can pocket a 10% discount off groceries and contactless card payment limits up to £45 will be accepted, making it easier, quicker and safer to shop.

The new Co-op will also provide a funding boost locally, giving back to causes in the area through its Membership scheme and it will also be looking to work with community partners as part of its Food Share scheme, which is designed not only to minimise food waste but also to share food with those in need, helping to alleviate food poverty.

Carly Muggivan, Co-op's Area Manager, said: "We are delighted to have the opportunity to make such a significant investment here in Ebbsfleet and the team is really looking

forward to serving the community with a brand new store. Co-op is committed to connecting communities and making a difference, and our aim is to operate at the heart of local life. We also want customers to know that they can become a Member of their Co-op, and make a difference every time they swipe their Membership card when buying own branded products."

The Co-op picked up the "Convenience Retailer of the Year" and "Food-to-go Retailer of the Year" titles at the latest Retail Industry Awards.

Adam Forster of Newcrest, which delivered the store, said further shops are due to come in due course.

He said: "We are pleased to have delivered the Co-op store for local residents, especially considering the circumstances we have encountered to prior to this point. We are soon to deliver the remainder of the adjacent shops bringing further benefit to the local community".

## EBBSFLEET CULTURAL CO-LOCATION

A multidisciplinary consortia led by collaborating architects RCKa and AOC has been appointed by EDC to develop a best practice approach to the co-design and co-location of cultural and community infrastructure for Ebbsfleet Garden City. The work is part of Creative Estuary, an ambitious programme to transform 60 miles of the Thames Estuary across Essex and Kent into one of the most exciting cultural hubs in the world, putting culture at the heart of placemaking.

Over the next 9 months, focusing on Whitecliffe and Northfleet Riverside, the consortia will work with local residents, key stakeholders, and creative professionals to develop proposals for a range of high-quality community buildings. The aim is to co-locate a range of creative and cultural facilities which enable local people and creative businesses to flourish alongside civic uses, to maximise usage, viability and sustainability. The consortia will be using a range of methods to encourage local people to share their ideas for community and creative facilities.

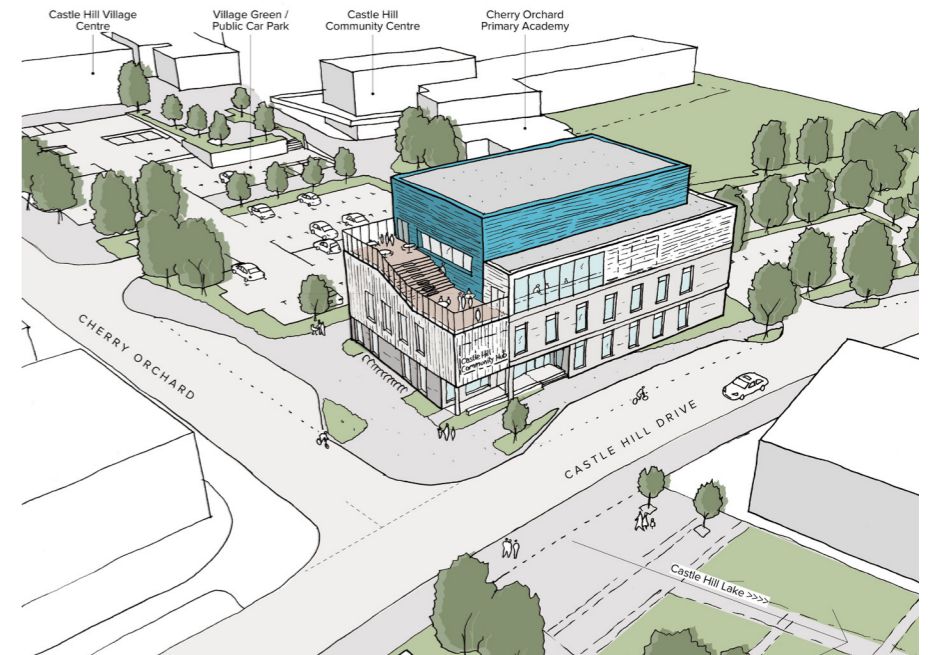
The results of the cultural co-location project will be used to develop a Cultural Infrastructure Prospectus for Ebbsfleet to attract creative businesses and facilities to the area, maximising on its strategic location and supporting the ambitions of Creative Estuary. The consortia will also share lessons learnt during the project through a best practice guide for national and international cultural developments in the future. If anyone would like to be involved please contact daisy.zhai@theaoc.co.uk for Whitecliffe and andrea.villate@rcka.co.uk for Northfleet Riverside.

## PLANS FOR ADDITIONAL COMMUNITY BUILDING

Ebbsfleet Development Corporation (EDC) and the developer of the Castle Hill Commercial Centre, Newcrest, are teaming up to bring an additional community building to Castle Hill to offer opportunities for local residents to develop a greater range of community and cultural activities.

In EDC's recent 'Learning from Lockdown' web survey, Castle Hill residents reiterated the need to see new amenity spaces and spaces for the community opening up to help the community come together.

Early work with local groups has shown that there is a demand for uses such as a café/bar/restaurant, good quality arts and performance space, workspace for local businesses and flexible space for community use. The public consultation exercise has now ended but please email [contactebbsfleetdc@ebbsfleetdc.org.uk](mailto:contactebbsfleetdc@ebbsfleetdc.org.uk), or call 0303 444 2586 for more information.



## PUBLIC ART CONSULTATION

In conjunction with Groundwork South, consultation has taken place on three design proposals by top artists, for public art on the Hedge Lane and Southfleet Road roundabouts. Groundwork were pleased to have such a good response to the consultation and the outcome will be shared in due course.

We are also pleased to announce that the public art proposals previously chosen by residents for Castle Hill Central area; have now received planning approval, and they will be installed in Spring/Summer 2021 after fabrication. These include the following pieces:



Foraging pigs by Andy Hazell

'The Homecoming' by Laurence Edwards. A Norman soldier tired and returning from war to his home at the Norman fort that was on the site of the new play area near Castle Hill Community Centre.



## CASTLE HILL

There are now around 950 occupations in Castle Hill.

Thanks to everyone who completed the surveys on transport, health and education, which will be used to inform future provision.

Brewer Shepherd Neame will be starting construction of the pub and boutique hotel in 2021.

If you haven't seen it yet, we're pleased that the new Post Box outside the community centre is now in operation with Royal Mail.

The footpath link from Castle Hill to Ebbsfleet Green is progressing well. Work on the Castle Hill side is now complete and Redrow Homes is now carrying out the final works on their side. This should be open by end November.

Work on the new bridges across the lake continues. The causeways should be removed mid-December and the water levels will start to return. While the water level is low, we are also completing some work on the lake banks. Ecologist Middlemarch Ltd are on site most days supervising all the works. Access to the lake area will be opened in phases and as the building alongside is finished. We are planning to introduce viewing platforms to allow people to get closer to the water edge.

## NEW TRANSPORT OPTIONS UNDERWAY

Two new transport options are coming in early December, to residents at Whitecliffe.

A new 'on demand' bus, to replace the current service, will soon be available for residents at Whitecliffe and Ebbsfleet Green. Similar to the Uber format, residents will be able to book a pick up via an app or phone call. The bus will be in operation until Fastrack is open and is being funded by Henley Camland and Redrow Homes.

Henley Camland is also working on a partnership with Enterprise Car Club. The car club is a natural extension of the local car rental service that Enterprise Rent-A-Car has been offering in the UK for over 20 years.

The hourly, self-service car rental, will be available to members 24 hours a day, all year round. Residents who become members of the Car Club will be able to book in advance or on the go using an app, and have access 1,400+ vehicles conveniently located on streets, at train stations, car parks and Enterprise branches across Ebbsfleet, Kent, & the UK.



As a result of Covid-19, Enterprise Car Club have enhanced their cleaning regime to ensure each vehicle is thoroughly cleaned between every rental and backed with the Complete Clean Pledge, which pays particular attention to more than 20-plus high-touch points.

<https://www.enterpriseclub.co.uk/gb/en/about/complete-clean-pledge.html>.

More detailed information including how to book both transport options, associated costs and incentives, will be shared with residents soon.

## ALKERDEN AND ASHMERE

Earthworks continue and the Fastrack Route from Castle Hill to Bluewater is now “dry”, with only (!) around 200,000 m3 of earth to be cut/filled before continuing the tarmac road already through Alkerden. The access road near to Valley Gardens is being used for construction, but Henley Camland is looking to provide an alternative access from the south once the land forming works are complete, later this year or early in 2021. Countryside Properties with their partner Clarion Housing Group, who are building 281 new homes in Ashmere, will be starting on site soon. Anyone interested in receiving more details about the upcoming properties

is invited to register their interest at <https://www.countrysideproperties.com/all-developments/kent/ashmere>.

In Craylands Gorge, the existing bridge structure has now been removed and the new bridge will be open around March 2021.

The Planning Application for the Alkerden Academy site consisting of a primary school, nursery and secondary and sports complex, is expected to be tabled by Ebbsfleet Development Corporation at their meeting in November 2020.

At Alkerden Barn some activity is now taking place around the outbuildings which will not affect the Barn and House. Plans continue to be developed following the public consultation on the new public park.

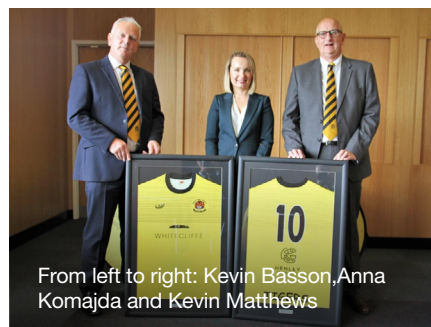


## THREE SEASON SPONSORSHIP OF SWANSCOMBE TIGERS FC

Henley Camland is delighted to be sponsoring the home shirts for Swanscombe Tigers for the next three seasons. This FA Charter Standard Club, run 27 teams including three girls teams, five ability teams and three senior teams as well as a number of youth teams.

The announcement of the three year agreement took place at the Kuflink Stadium with representatives from the Club Kevin Basson (Chairman), Kevin Matthews (Club Secretary), Peter Alloway (Vice Chairman), committee members Penney Chesterton and Marian Allen and Anna Komajda from Henley Camland.

Kevin Basson, Chairman of Swanscombe Tigers commented that the partnership would really help the Club significantly in these challenging times enabling them to continue with their growth plans over the next three seasons.



From left to right: Kevin Basson, Anna Komajda and Kevin Matthews

Anna Komajda, Project Manager for Henley Camland, said: “Football involves children and families of all ages and is a huge part of any community. We’re providing new pitches as part of our development at Whitecliffe which the Tigers are keen to use. It’s great to be connecting the existing community with the new. We’re really pleased to be able to lend our support to the Swanscombe Tigers and look forward to watching their progress in the coming seasons.”

## CONTACT US

### MANAGING AGENTS – RMG

Fraser Pollock  
020 7598 1600  
[fraser.pollock@rmg.london](mailto:fraser.pollock@rmg.london)

### COMMUNITY CENTRE

Craig Morrison,  
Estates & Community  
Centre Manager (on site)  
[craig.morrison@rmg.london](mailto:craig.morrison@rmg.london)  
Community Centre Bookings  
[www.castlehillcommunitycentre.com](http://www.castlehillcommunitycentre.com)  
[enquiries@castlehillcommunitycentre.com](mailto:enquiries@castlehillcommunitycentre.com)

### FURTHER INFORMATION

Email: [info@whitecliffeinfo.com](mailto:info@whitecliffeinfo.com)  
Website: [www.whitecliffeinfo.com](http://www.whitecliffeinfo.com)  
Twitter: @whitecliffe6500

