

Castle Hill Village

SCULPTURE DESIGN

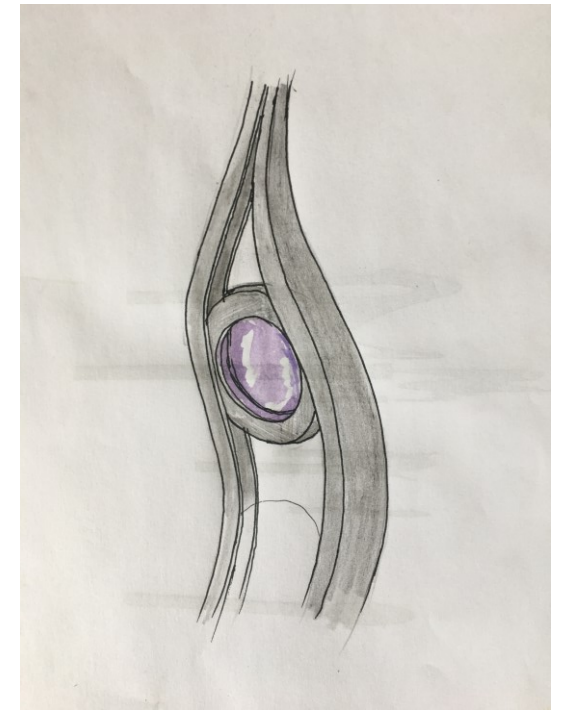
Seed pod sculpture

- ▶ This sculpture is derived from the seed pods of the Lathyrus Major that once grew in the woodlands.
- ▶ It will stand 3.5m high, and will be on a stone plinth approximately 300mm high
- ▶ It will be made from galvanised mild steel, the main structure will be 50mmx100mmx6mm channel section bent and fabricated to form the design
- ▶ The top element of curling metal will be 50mm solid round bar forged to a taper then bent to shape
- ▶ There will be cast glass elements to represent the seeds of this plants pod.



The Cast glass elements

The cast glass elements will be fitted to the sculpture in a similar way to the “world” sculpture that I made in 2010 that is in St Augustin's school Redditch, the cast glass is completely surrounded by the steel socket, the glass is 50mm thick there are no sharp edges, it is frost proof and vandal resistant.



Meadows and Parkfield school gates, Bromsgrove.

This is a gate I made for a school in Bromsgrove in 2008, the photo was taken on installation day. The cast glass with copper inclusions was used here and 10 years later the glass is fine and of course this is a moving gate being opened and closed daily and on the street with public access, so far the glass or gate has had no vandalism.



- ▶ The cast glass elements could contain laser cut copper designs of other wild flowers from the woodland
- ▶ These copper inserts are embedded in the glass during the casting process. The mould is half filled with molten glass then the copper design is placed onto the hot glass then it is covered with another layer of molten glass. Thus the fragile copperwork is surrounded by coloured glass

